

测试报告

No. CANEC1625518726

日期: 2017年01月04日 第1页,共9页

昆山汉品电子有限公司
中国昆山市玉山镇城北五联路698号

以下测试之样品是由申请者所提供及确认: 遮光胶带

SGS工作编号: CP16-077339 - GZ
测试样品信息: XPH10BB
客户参考信息: 见备注
样品接收日期: 2016年12月26日
测试周期: 2016年12月26日 - 2017年01月04日
测试要求: 根据客户要求测试
测试方法: 请参见下一页
测试结果: 请参见下一页

结论: 基于所送样品进行的测试, 镉、铅、汞、六价铬、多溴联苯(PBBs)、多溴二苯醚(PBDEs)、邻苯二甲酸酯(如邻苯二甲酸二丁酯(DBP)、邻苯二甲酸丁苄酯(BBP)、邻苯二甲酸二(2-乙基己基)酯(DEHP)和邻苯二甲酸二异丁酯(DIBP))的测试结果符合欧盟RoHS指令2011/65/EU附录II的修正指令(EU) 2015/863的限值要求。

通标标准技术服务有限公司广州分公司
授权签名

吕爱凤

Merry Lv 吕爱凤
批准签署人

备注: 本报告是编号为CANEC1625518725报告的中文版本。



测试报告

No. CANEC1625518726

日期: 2017年01月04日 第2页,共9页

测试结果:

测试样品描述:

样品编号	SGS样品ID	描述
SN1	CAN16-255187.005	黑色粘性片

备注:

- (1) 1 mg/kg = 0.0001%
- (2) MDL = 方法检测限
- (3) ND = 未检出 (< MDL)
- (4) "-" = 未规定

RoHS指令2011/65/EU附录II的修正指令(EU) 2015/863

- 测试方法:
- (1)参考IEC 62321-5:2013, 用ICP-OES测定镉的含量。
 - (2)参考IEC 62321-5:2013, 用ICP-OES测定铅的含量。
 - (3)参考IEC 62321-4:2013, 用ICP-OES测定汞的含量。
 - (4)参考IEC 62321:2008, 用紫外-可见分光光度计比色法测定六价铬的含量。
 - (5)参考IEC 62321-6:2015, 用GC-MS测定PBBs(多溴联苯)和PBDEs(多溴二苯醚)的含量。
 - (6)参考IEC 62321-8 :2013(111/321/CD), 用GC-MS测定邻苯二甲酸酯的含量。

测试项目	限值	单位	MDL	005
镉 (Cd)	100	mg/kg	2	ND
铅 (Pb)	1,000	mg/kg	2	ND
汞 (Hg)	1,000	mg/kg	2	ND
六价铬(Cr(VI))	1,000	mg/kg	2	ND
多溴联苯之和(PBBs)	1,000	mg/kg	-	ND
一溴联苯	-	mg/kg	5	ND
二溴联苯	-	mg/kg	5	ND
三溴联苯	-	mg/kg	5	ND
四溴联苯	-	mg/kg	5	ND
五溴联苯	-	mg/kg	5	ND
六溴联苯	-	mg/kg	5	ND
七溴联苯	-	mg/kg	5	ND
八溴联苯	-	mg/kg	5	ND
九溴联苯	-	mg/kg	5	ND
十溴联苯	-	mg/kg	5	ND
多溴二苯醚之和(PBDEs)	1,000	mg/kg	-	ND
一溴二苯醚	-	mg/kg	5	ND



Unless otherwise agreed in writing, this document is issued by the Company subject to its General Conditions of Service printed overleaf, available on request or accessible at <http://www.sgs.com/en/Terms-and-Conditions.aspx> and, for electronic format documents, subject to Terms and Conditions for Electronic Documents at <http://www.sgs.com/en/Terms-and-Conditions/Terms-e-Documents.aspx>. Attention is drawn to the limitation of liability, indemnification and jurisdiction issues defined therein. Any holder of this document is advised that information contained hereon reflects the Company's findings at the time of its intervention only and within the limits of Client's instructions, if any. The Company's sole responsibility is to its Client and this document does not exonerate parties to a transaction from exercising all their rights and obligations under the transaction documents. This document cannot be reproduced except in full, without prior written approval of the Company. Any unauthorized alteration, forgery or falsification of the content or appearance of this document is unlawful and offenders may be prosecuted to the fullest extent of the law. Unless otherwise stated the results shown in this test report refer only to the sample(s) tested.

Attention: To check the authenticity of testing /inspection report & certificate, please contact us at telephone: (86-755) 8307 1443, or email: CN_Doccheck@sgs.com

测试报告

No. CANEC1625518726

日期: 2017年01月04日 第3页,共9页

测试项目	限值	单位	MDL	005
二溴二苯醚	-	mg/kg	5	ND
三溴二苯醚	-	mg/kg	5	ND
四溴二苯醚	-	mg/kg	5	ND
五溴二苯醚	-	mg/kg	5	ND
六溴二苯醚	-	mg/kg	5	ND
七溴二苯醚	-	mg/kg	5	ND
八溴二苯醚	-	mg/kg	5	ND
九溴二苯醚	-	mg/kg	5	ND
十溴二苯醚	-	mg/kg	5	ND
邻苯二甲酸二丁酯 (DBP)	1000	mg/kg	50	ND
邻苯二甲酸丁苄酯(BBP)	1000	mg/kg	50	ND
邻苯二甲酸二(2-乙基己基)酯(DEHP)	1000	mg/kg	50	ND
邻苯二甲酸二异丁酯(DIBP)	1000	mg/kg	50	ND

备注:

(1) 最大允许极限值引用自RoHS指令(EU) 2015/863。

卤素

测试方法: 参考EN 14582:2016, 用 IC分析。

测试项目	单位	MDL	005
氟 (F)	mg/kg	50	ND
氯 (Cl)	mg/kg	50	ND
溴 (Br)	mg/kg	50	ND
碘 (I)	mg/kg	50	ND



备注:

XPH1020B XPH10BA XPH11BB XPH110B XPH100G
 XPH1030B XPH10BC XPH11FB XPH100B XPH1MT2
 XPH1031B XPH1ABC XPH11FB01 XPH200B XPH300G
 XPH1038B XPH1CBC XPH12BB XPH210B XPH310G
 XPH1039B XPH10BD XPH10BB XPH300B XPH410G
 XPH1050B XPH1FBC XPH1CBB XPH310B XPH400G
 XPH1075B XPH10BT XPH300B XPH400B XPH100*
 XPH1100B XPH1F0A XPH1FBB XPH410B XPH200*
 XPH1150B XPH1FBA XPH1FBB01 XPH30BB XPH300*
 XPH1100H XPH1FBA02 XPH1FBB02 XPH10PB XPH400*
 XPH1***B XPH1FBA03 XPH1FBB03 XPH11PB XPH110*
 XPH1***H XPH1FBA04 XPH1FBB04 XPH210*
 XPH1M20B XPH1050BA XPH20BB XPH310*
 XPH1M38B XPH1100BA XPH21BB XPH410*
 XPH1M30B XPH1050BC XPH2FBB XPH1**A
 XPH1M50B XPH1100BC XPH21FB XPH1**B
 XPH1MA0B XPH20BA XPH1100BB XPH1**C
 XPH1M**B XPH20BC XPH1050BB
 XPH2030B XPH2FBA XPH1100BB
 XPH2020B XPH2FBC XPH10YB
 XPH2***B XPH300A XPH10*B
 XPH110BB XPH300C XPH1APAF
 XPH1200B XPH400A XPH1030F
 XPH1APAB XPH400C XPH1***F
 XPH1PAPB XPH10HC XPH1FB0
 XPH10P00 XPH1FA0
 XPH1020B** XPH10BA** XPH11BB** XPH110B** XPH100G**
 XPH1030B** XPH10BC** XPH11FB** XPH100B** XPH1MT2**
 XPH1031B** XPH1ABC** XPH11FB01** XPH200B** XPH300G** XPH1038B** XPH1CBC**
 XPH12BB** XPH210B** XPH310G**
 XPH1039B** XPH10BD** XPH10BB** XPH300B** XPH410G**
 XPH1050B** XPH1FBC** XPH1CBB** XPH310B** XPH400G**
 XPH1075B** XPH10BT** XPH300B** XPH400B** XPH100***
 XPH1100B** XPH1F0A** XPH1FBB** XPH410B** XPH200***
 XPH1150B** XPH1FBA** XPH1FBB01** XPH30BB** XPH300***
 XPH1100H** XPH1FBA02** XPH1FBB02** XPH10PB** XPH400***
 XPH1***B** XPH1FBA03** XPH1FBB03** XPH11PB** XPH110***
 XPH1***H** XPH1FBA04** XPH1FBB04** XPH210***
 XPH1M20B** XPH1050BA** XPH20BB** XPH310***
 XPH1M38B** XPH1100BA** XPH21BB** XPH410***
 XPH1M30B** XPH1050BC** XPH2FBB** XPH1**A**
 XPH1M50B** XPH1100BC** XPH21FB** XPH1**B**



Unless otherwise agreed in writing, this document is issued by the Company subject to its General Conditions of Service printed overleaf, available on request or accessible at <http://www.sgs.com/en/Terms-and-Conditions.aspx> and, for electronic format documents, subject to Terms and Conditions for Electronic Documents at <http://www.sgs.com/en/Terms-and-Conditions/Terms-e-Documents.aspx>. Attention is drawn to the limitation of liability, indemnification and jurisdiction issues defined therein. Any holder of this document is advised that information contained hereon reflects the Company's findings at the time of its intervention only and within the limits of Client's instructions, if any. The Company's sole responsibility is to its Client and this document does not exonerate parties to a transaction from exercising all their rights and obligations under the transaction documents. This document cannot be reproduced except in full, without prior written approval of the Company. Any unauthorized alteration, forgery or falsification of the content or appearance of this document is unlawful and offenders may be prosecuted to the fullest extent of the law. Unless otherwise stated the results shown in this test report refer only to the sample(s) tested.

XPH1MA0B** XPH20BA** XPH1100BB** XPH1**C**
XPH1M**B** XPH20BC** XPH1050BB**
XPH2030B** XPH2FBA** XPH1100BB**
XPH2020B** XPH2FBC** XPH10YB**
XPH2***B** XPH300A** XPH10*B**
XPH110BB** XPH300C** XPH1APAF**
XPH1200B** XPH400A** XPH1030F**
XPH1APAB** XPH400C** XPH1***F**
XPH1PAPB** XPH10HC** XPH1FB0**
XPH10P00** XPH1FA0**

备注：“***”表示任意尺寸厚度代码
“*”表示 0~9或A~Z中的任意一个

Unless otherwise agreed in writing, this document is issued by the Company subject to its General Conditions of Service printed overleaf, available on request or accessible at <http://www.sgs.com/en/Terms-and-Conditions.aspx> and, for electronic format documents, subject to Terms and Conditions for Electronic Documents at <http://www.sgs.com/en/Terms-and-Conditions/Terms-e-Documents.aspx>. Attention is drawn to the limitation of liability, indemnification and jurisdiction issues defined therein. Any holder of this document is advised that information contained hereon reflects the Company's findings at the time of its intervention only and within the limits of Client's instructions, if any. The Company's sole responsibility is to its Client and this document does not exonerate parties to a transaction from exercising all their rights and obligations under the transaction documents. This document cannot be reproduced except in full, without prior written approval of the Company. Any unauthorized alteration, forgery or falsification of the content or appearance of this document is unlawful and offenders may be prosecuted to the fullest extent of the law. Unless otherwise stated the results shown in this test report refer only to the sample(s) tested.

Attention: To check the authenticity of testing /inspection report & certificate, please contact us at telephone: (86-755) 8307 1443, or email: CN_Doccheck@sgs.com



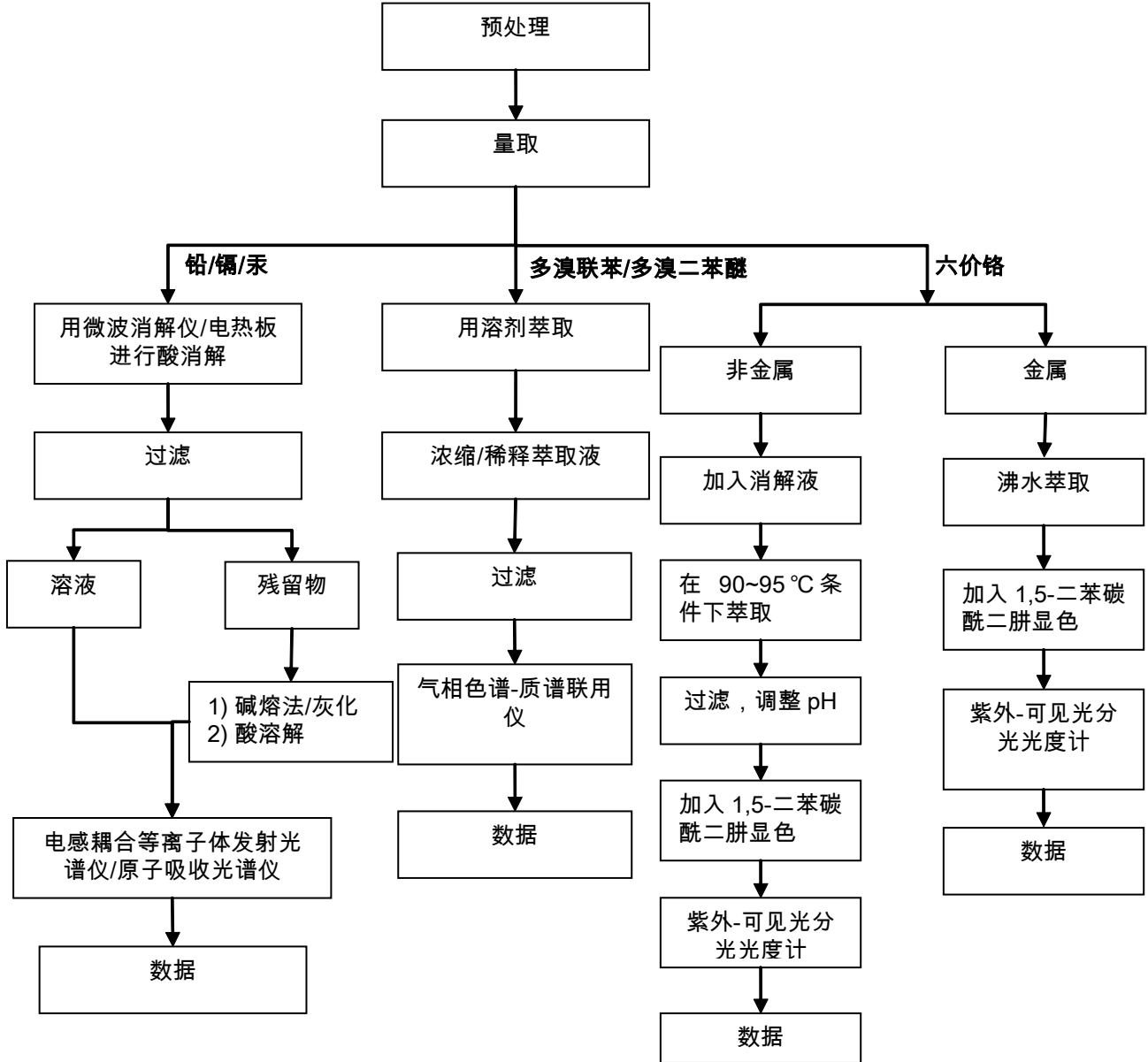
SGS-CSTC 深圳技术服务有限公司
Guangzhou Branch Testing Center Chemical Laboratory.

198 Kazhu Road, Sciotech Park Guangzhou Economic & Technology Development District, Guangzhou, China 510663 t (86-20) 82155555 f (86-20) 82075113 www.sgs.com.cn
中国·广州·经济技术开发区科学城科珠路198号 邮编: 510663 t (86-20) 82155555 f (86-20) 82075113 e sgs.china@sgs.com

附件

Pb/Cd/Hg/Cr⁶⁺/PBBs/PBDEs 测试流程图

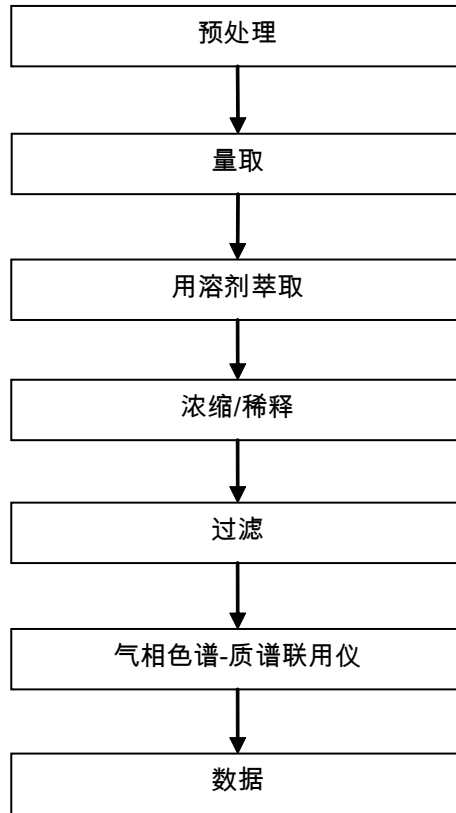
- 1) 分析人员：张梓路 / 胡香云
- 2) 项目负责人：汪丹 / 刘琼
- 3) 样品按照下述流程被完全消解 (六价铬和多溴联苯/多溴二苯醚测试除外)。



附件

Phthalates 测试流程图

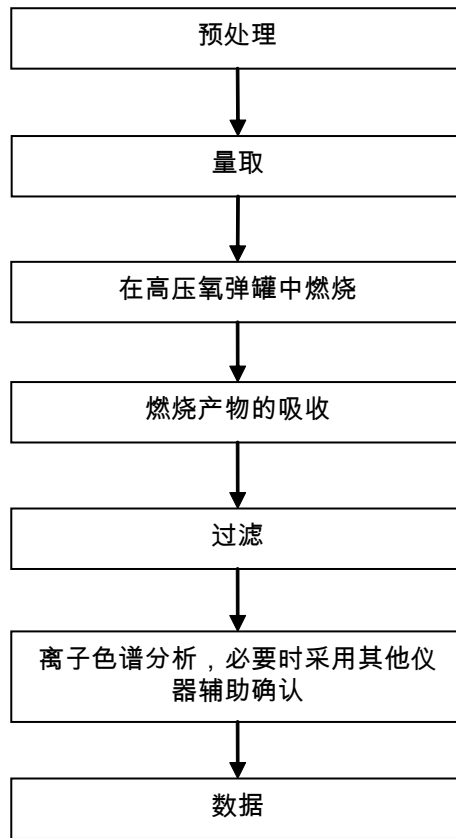
- 1) 分析人员: 胡香云
- 2) 项目负责人: 刘琼



附件

Halogen 测试流程图

- 1) 分析人员: 肖戈
- 2) 项目负责人: 汪丹



样品照片:



此照片仅限于随SGS正本报告使用

*** 报告完 ***



Unless otherwise agreed in writing, this document is issued by the Company subject to its General Conditions of Service printed overleaf, available on request or accessible at <http://www.sgs.com/en/Terms-and-Conditions.aspx> and, for electronic format documents, subject to Terms and Conditions for Electronic Documents at <http://www.sgs.com/en/Terms-and-Conditions/Terms-e-Documents.aspx>. Attention is drawn to the limitation of liability, indemnification and jurisdiction issues defined therein. Any holder of this document is advised that information contained hereon reflects the Company's findings at the time of its intervention only and within the limits of Client's instructions, if any. The Company's sole responsibility is to its Client and this document does not exonerate parties to a transaction from exercising all their rights and obligations under the transaction documents. This document cannot be reproduced except in full, without prior written approval of the Company. Any unauthorized alteration, forgery or falsification of the content or appearance of this document is unlawful and offenders may be prosecuted to the fullest extent of the law. Unless otherwise stated the results shown in this test report refer only to the sample(s) tested.

Attention: To check the authenticity of testing /inspection report & certificate, please contact us at telephone: (86-755) 8307 1443, or email: CN_Doccheck@sgs.com